

vendée **SALTSPRING 2016**

SAILING INSTRUCTIONS

July 8-10, 2016

1 RULES

1.1 The race will be governed by the rules as defined in Racing Rules of Sailing 2013-2016, the prescriptions of Sail Canada, the Offshore Special Regulations issued by ISAF, the class rules of the PHRF BC and the Notice of Race.

2 NOTICES TO COMPETITORS

2.1 Notices to competitors will be posted on the Official Notice Board located at the dock gatehouse and on the race website at www.saltspringsailing.ca.

3 CHANGES TO SAILING INSTRUCTIONS

3.1 Any changes to the Sailing Instructions will be posted before 0900 on Saturday 9 July, except that any changes to the schedule will be posted before 2000 on Friday 8 July.

4 SIGNALS MADE ASHORE

4.1 No signals will be made ashore.

5 COURSE

5.1 The course shall be clockwise around Salt Spring Island, with an overnight stop in Maple Bay.

5.2 On Leg 1, Salt Spring Island is to be left to starboard, and the Ganges Harbour Chain Islands are to be left to port.

5.3 On Leg 2, Salt Spring Island, Idol Island, Grappler Rock, Atkins Reef, and the Ganges Harbour Chain Islands are to be left to starboard.

6 DIVISIONS

6.1 Division breaks will be posted on the Official Notice Board on or before Friday July 8.

6.2 There will be one division of single-handed boats and two divisions of double-handed boats.

vendée **SALTSPRING 2016**

7 THE STARTS

- 7.1 Each leg will begin with a mass start of all competing boats.
- 7.2 The scheduled time of the Leg 1 warning signal will be **0955 hrs** on July 9.
- 7.3 The scheduled time of the Leg 2 warning signal will be **0855 hrs** on July 10.
- 7.4 Each leg will be started using Rule 26 with the warning signal made five minutes before the starting signal. Times shall be taken from visual signals made aboard the Committee Boat. The absence of a sound signal shall not be grounds for redress.
- 7.5 **The start line for Leg 1** will be located between an orange flag on the Committee Boat (“Velica” an Alerion Express 33 sailboat with dark green hull) anchored to the southeast of the SISC breakwater float, and a yellow inflatable buoy off Goat Island, to the north.
- 7.6 **The start line for Leg 2** will be located between an orange flag on the Committee Boat (“Velica” an Alerion Express 33 sailboat with dark green hull) anchored to the northeast of the MBYC breakwater float, and the Maple Bay 5 knot buoy.
- 7.7 Rule 30.1 (“I” Flag Rule – Round the End) will be in effect for both starts.
- 7.8 For the convenience of boats, the Race Committee will transmit an unofficial countdown on VHF Channel 72. Errors in the countdown transmission shall not be grounds for redress. This changes rule 62.1 (a).
- 7.9 The Race Committee will attempt to broadcast the sail numbers of boats that are on the course side of the starting line at the starting signal on VHF Channel 72. Failure to make a broadcast or make it promptly will not be grounds for redress. This change rule 62.1 (a).
- 7.10 In the event of a General Recall or Postponement, competitors shall pay attention to warning signals made from the Committee Boat.

8 THE FINISHES (See Appendix I for diagrams)

- 8.1 **The Leg 1 Finish Line** is in front of the MBYC breakwater dock between the flag at the south end of the dock and a marker buoy near the opposite shore.
- 8.2 **The Leg 1 Short Course Finish Line** will be a bearing of 60°M to Musgrave Rock Buoy (just south of Musgrave Landing).

vendée **SALTSPRING 2016**

8.3 **The Leg 2 Finish Line** will be the transit of the red and black diamond marker on the SISC breakwater float and the flag pole at the end of the SISC upper pier. Boats must also pass between the two yellow-and-white flagged buoys.

8.4 **The Leg 2 Short Course Finish Line** will be the transit of the beacons at Grappler Rock and Southey Point, once one has rounded Southey Point.

8.5 ***All boats are required to record their own finish times at the short course mark as well as the full finish line, for each leg.***

8.6 After crossing the Finishing Line, all competitors are required to promptly submit their completed Finish Form to the Committee Boat. *Boats that fail to submit a completed Finish Form will be scored DNF.*

9 TIME LIMITS

9.1 **The Time Limit for Leg 1** of the race will be at **1800** on Saturday, July 9.

9.2 **The Time Limit for Leg 2** of the race will be at **1630** on Sunday, July 10.

9.2 *If less than twenty-five percent (7 boats) of the starting fleet complete the full course within the time limit, the short course finish will be scored. This changes RRS Rule 35. If the Committee Boat determines that the short course finish will be used, it will broadcast this indication to all boats on VHF Channel 72 shortly after the time limit.*

10 PROTESTS AND REQUESTS FOR REDRESS

10.1 Competitors are reminded that this race involves a wide range of boat sizes and speed potentials, and crews of varying experience. All boats should make an extra effort to appreciate the performance differences of nearby vessels. If fouls do occur, please respect the principles of good sportsmanship.

10.2 Protests and requests for redress shall be delivered to the Committee Boat within one hour of the finish of the boat filing the protest or request for redress.

10.3 Notices of hearing and named parties will be posted on the Official Notice Board within 1 hour of the receipt of protest or request for redress. Hearings will be held in the protest room, located on bottom floor of the SISC Clubhouse beginning at 1700 hrs on Sunday.

11 PENALTIES

11.1 Competitors are reminded that Rule 44.1 (two turns for breach of a rule in part 2 and one turn for

vendée **SALTSPRING 2016**

breach of Rule 31) are in effect, and that Rule 44.3 is not.

11.2 The Protest Committee, at its sole discretion, shall impose penalties for violations of Rules other than in part 2 that may be up to and including the disqualification of a boat from the race. This modifies Rule 64.1.

11.3 The penalty for any use of propulsion permitted under 12.8 will be a Two-Turns Penalty, plus a time penalty of 1% of the boat's elapsed time. The use of propulsion must be logged with diagrams and reported to the Race Committee on the Finish Form within one hour of finishing. This changes Rule 44.

12 COMMUNICATIONS AND SAFETY

12.1 Except in an emergency, or in fulfilling the requirements of the Sailing Instructions, a boat while still racing shall neither make or receive radio transmissions, mobile telephone calls, or use mobile internet devices, to obtain information not freely available to all boats.

12.2 **The Race Committee** will monitor **VHF Channel 72** and be available at **250-526-0027**.

12.3 All Emergency Communications will use VHF channel 16. The Canadian Coast Guard will be the primary contact for all emergency communications. If possible, also inform the Race Committee.

12.4 The ISAF Offshore Special Regulations for a Category 4 race, with Vendée Saltspring modifications, shall apply to all competing vessels.

12.5 The Race Committee reserves the right to inspect boats for safety compliance prior to the start or after their finish.

12.6 After a boat's finish, the Race Committee reserves the right to confirm the "as sailed" specifications of any boat that has been issued a One-time, Guest rating certificate.

12.7 Saltspring Island Sailing Club recommends that all sailors wear Transport Canada approved flotation devices.

12.8 If a boat is drifting into danger, grounded, or avoiding a collision, minimal use may be made of propulsion provided the boat does not gain an advantage by use of propulsion. The use of propulsion must be logged with diagrams and reported to the Race Committee on the Finish Form within one hour of finishing. Please see Section 11.3 for penalties.

12.9 In the event of grounding, outside help will result in disqualification.

12.11 Boats retiring **MUST** notify the Race Committee immediately via VHF Channel 72, or phone at **250-526-0027**. If there is no answer from the Race Committee, please leave a message with time, boat name and contact number.

vendée **SALTSPRING 2016**

12.12 Failure to notify the Race Committee that your boat is retiring may result in liability for any search costs that may be instigated. Boats may also be protested under Rule 69.1.

13 SCORING

13.1 Each leg of the race will be scored based on Time on Time. The full regatta will be scored using the low-points method to combine the results of the two legs.

14 AWARDS

14.1 Prizes will be awarded on Sunday, July 10, beginning approximately 1800.

14.2 Division Awards:

Single-handed boats – 1 award
Double-Handed Division 1 boats – 2 awards
Double-Handed Division 2 boats – 3 awards

15 ENVIRONMENTAL STEWARDSHIP

15.1 Vendée Saltspring strives to be a leader in environmental sustainability and subscribes to the Clean Regatta program published by Sailors for the Sea.

15.2 Competitors are reminded of the requirements of Rule 55 of the RRS. Competitors are encouraged to use extra precautions.

15.3 The waters around Saltspring Island Sailing Club and Ganges Harbour are designated No Discharge Zones. The nearest holding tank pump out is at the Salt Spring Harbour Authority Kanaka Dock.

15.4 Competitors are strongly encouraged to separate recyclables from on-board garbage and use appropriate shore-side containers.

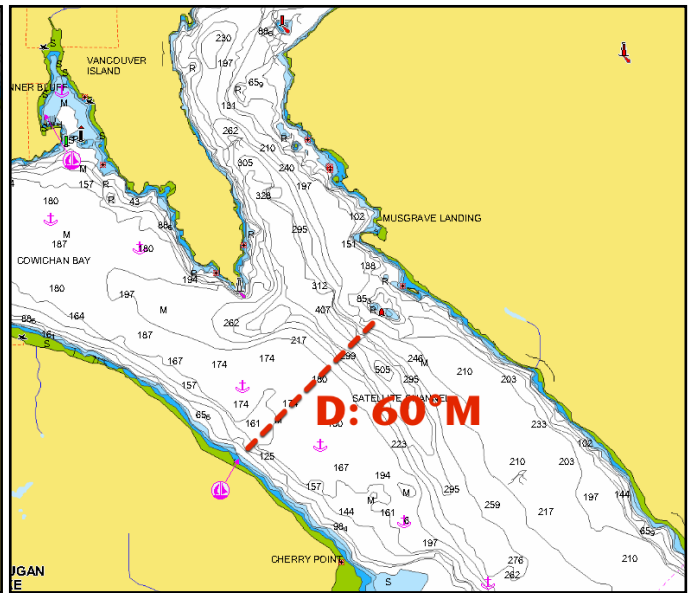
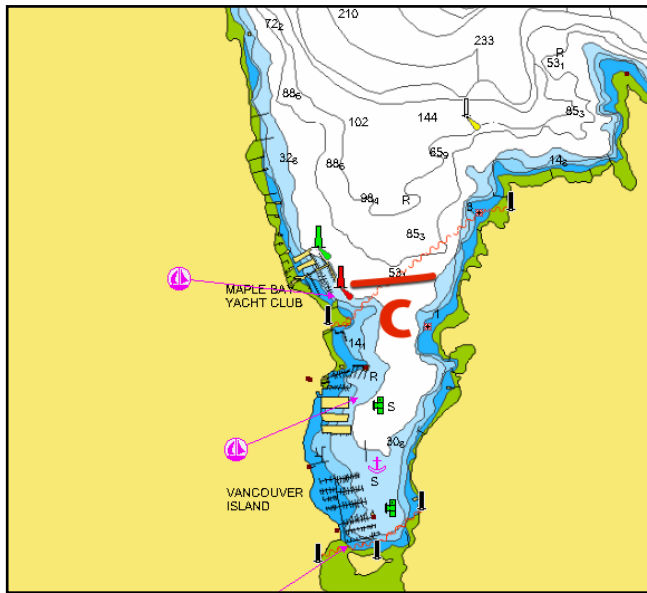
16 DISCLAIMER OF LIABILITY

16.1 Competitors participate in this event at their own risk. Please see rule 4, Decision to Race. Saltspring Island Sailing Club will not accept liability for material damage or personal injury or death sustained in conjunction with or prior to, during, or after this event.

vendée **SALTSPRING 2016**

APPENDIX 1 - Course Diagrams

SATURDAY - SISC to MBYC: “**C**” indicates full-course finish line; “**D**” indicates short-course finish line



SUNDAY - MBYC to SISC: “**F**” indicates short-course finish line; “**G**” indicates full-course finish line

